

DOCoMETRe - Overview

Frank BULOUP - frank.buloup@univ-amu.fr

Aix Marseille Université
Institut des Sciences du Mouvement



- What DOCoMETRe is useful for ?
- Workspace and workbench concepts
- GUI basics

You are using one of these DACQ systems :

- ADWin Pro or Gold
- Arduino Uno R3 & R4, with eventually ADS1115 module

And you want to :

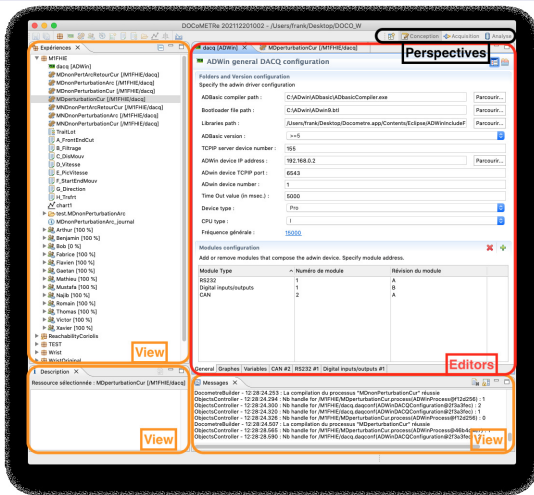
- easily manage Subjects/Sessions/Trials
- normalize your data acquisition routines
- have a quick look to acquired signals
- normalize your data processing routines

The workspace

It's a folder where everything is stored during a session. You can have more than one workspace and you can change workspace at start up. You can place all your experiments in a single workspace or you can create a workspace for each of your experiments, or you can have a workspace for each of your research topic etc. Please note that you can't have two simultaneous sessions pointing at the same workspace.

The workbench window

It's the main graphical interface. It shows all your workspace data arranged in experiments folders. In each experiment folder you can have data acquisition configuration files, processing files, subjects, sessions, trials folders etc.



Workbench keywords

Views, Editors, Perspectives

Views

Views allow users to see a graphical representation of experiments metadata

Editors

Editors allow users to create/modify experiments metadata

Perspectives

Perspective can show any number of views and editors. It has a default layout (views and editors arrangement). You can personalize most of all perspectives by moving/opening any view or editor.